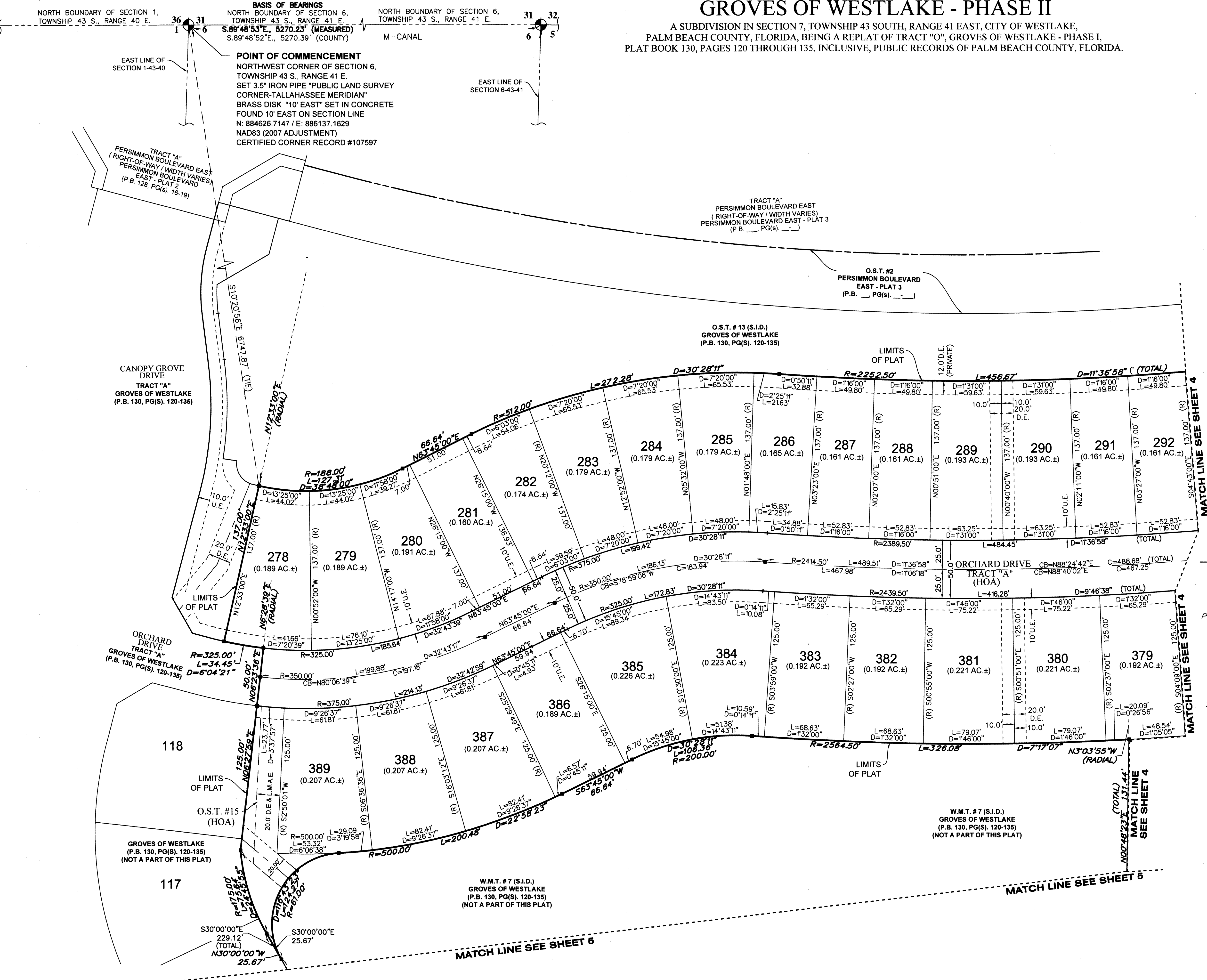
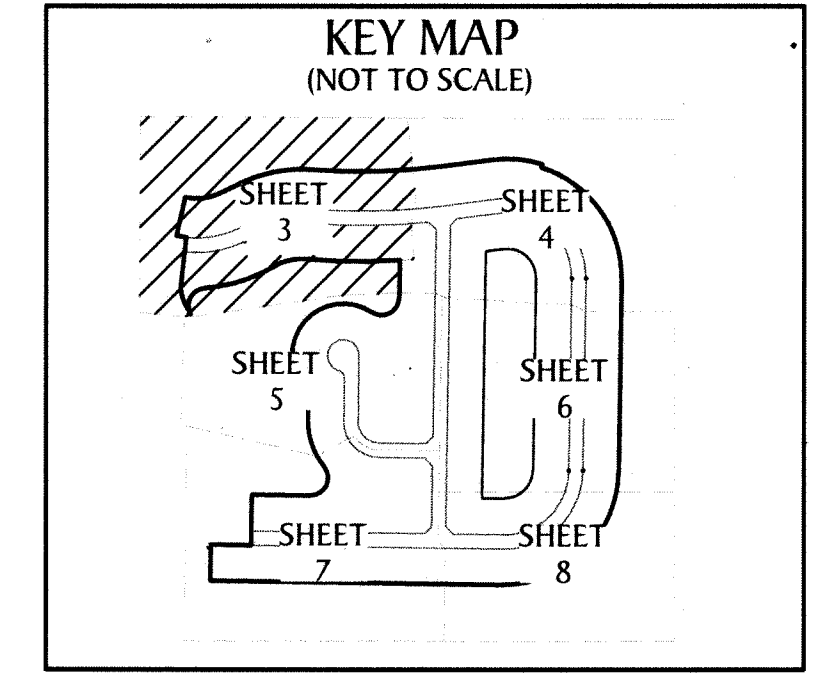
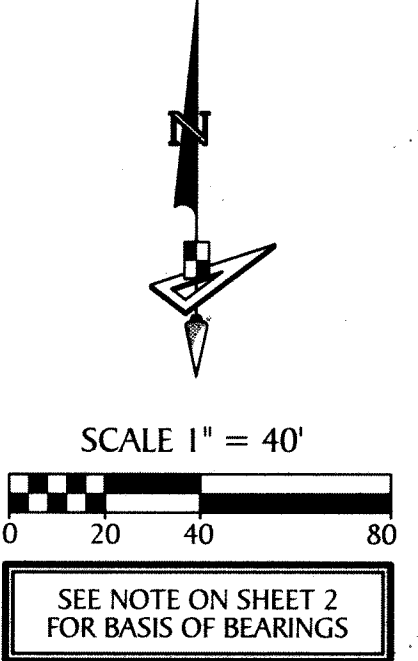


# GROVES OF WESTLAKE - PHASE II

A SUBDIVISION IN SECTION 7, TOWNSHIP 43 SOUTH, RANGE 41 EAST, CITY OF WESTLAKE, PALM BEACH COUNTY, FLORIDA, BEING A REPLAT OF TRACT "O", GROVES OF WESTLAKE - PHASE I, PLAT BOOK 130, PAGES 120 THROUGH 135, INCLUSIVE, PUBLIC RECORDS OF PALM BEACH COUNTY, FLORIDA.

41



**LEGEND**

- P.O.B. --- POINT OF BEGINNING
- P.O.C. --- POINT OF COMMENCEMENT
- P.B. --- PLAT BOOK
- D.B. --- DEED BOOK
- PG./PG(S) --- PAGE(S)
- NAD --- NORTH AMERICAN DATUM
- W.M.T. --- WATER MANAGEMENT TRACT
- O.S.T. --- OPEN SPACE TRACT
- P.B.C. --- PALM BEACH COUNTY
- U.E. --- UTILITY EASEMENT
- D.E. --- DRAINAGE EASEMENT
- L.M.A.E. --- LAKE MAINTENANCE ACCESS EASEMENT
- 7-43-41 --- SECTION-TOWNSHIP-RANGE
- R --- RADIUS
- L --- ARC LENGTH
- D --- DELTA ANGLE
- CB --- CHORD BEARING
- C --- CHORD
- R/W --- RIGHT-OF-WAY
- (R) --- RADIAL
- (NR) --- NON-RADIAL
- HOA --- HOMEOWNERS ASSOCIATION
- S.I.D. --- SEMINOLE IMPROVEMENT DISTRICT
- PRM --- PERMANENT REFERENCE MONUMENT
- --- PERMANENT CONTROL POINT
- --- FOUND PERMANENT REFERENCE MONUMENT
- --- SET 4"x4" CONCRETE MONUMENT WITH 2" ALUMINUM DISK STAMPED "PRM LB 7768"